

## Carpenter's square hedue ZN 600 mm with mm scale type A and marking holes

### Seamless carpenter's square made of stainless steel

The seamless carpenter's square is made of stainless steel, making it particularly resistant to rust, acid and environmental influences.

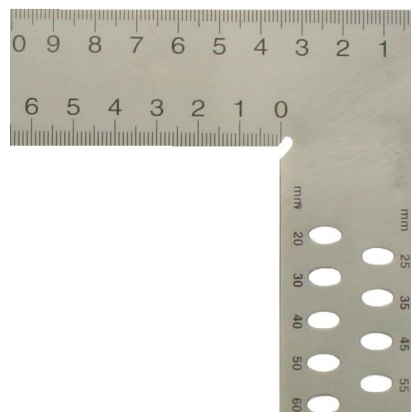
Thanks to the spring steel used, this angle has a very high degree of elasticity, allowing it to be bent without permanent deformation. The angle bracket can therefore be nestled against workpieces without any problems and then returns to its original state.

The high and lasting accuracy is achieved, among other things, by the seamless welded connection of the legs.

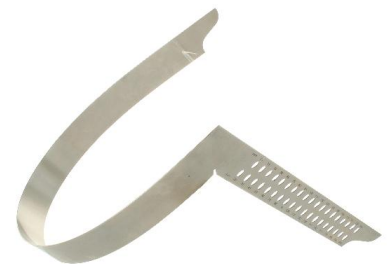
The carpenter's square is used in the production and finishing of timber joints. Components and add-on parts can be precisely aligned. The tool is also suitable for marking out and dimensioning.



**Made of stainless steel**



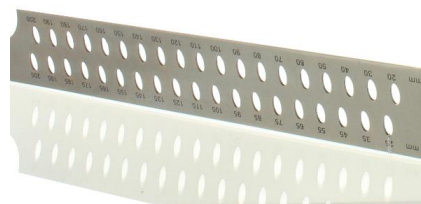
**With millimeter scale**



**Very elastic thanks to spring steel**

### Features

- Made of stainless steel
- With millimeter scale
- With marking holes
- Very elastic thanks to spring steel



**With marking holes**

### Specifications

Dimensions	600 x 280 x 1,2 mm
Warranty / Months	24
Accuracy of the 90° angle	0,028°
EAN	4012589902626