

Carpenter's square hedue ZP 800 mm with marking holes

Spot-welded carpenter's square made of stainless steel

The spot-welded carpenter's square is made of stainless steel, making it particularly resistant to rust, acid and environmental influences.

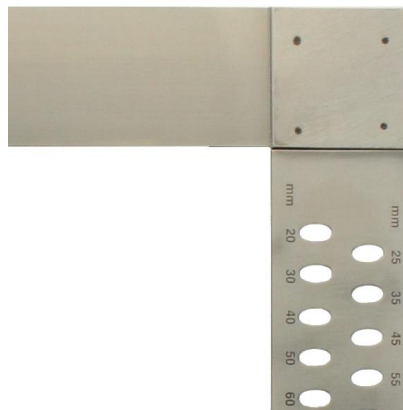
Thanks to the spring steel used, this angle has a very high degree of elasticity, allowing it to be bent without permanent deformation. The angle bracket can therefore be nestled against workpieces without any problems and then returns to its original state.

The high and lasting accuracy is achieved, among other things, by multiple spot welding of the legs.

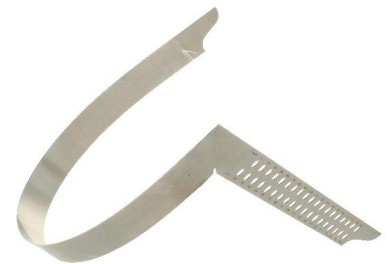
The carpenter's square is used in the production and finishing of timber joints. Components and add-on parts can be precisely aligned. The device is also suitable for marking out and dimensioning.



Made of stainless steel



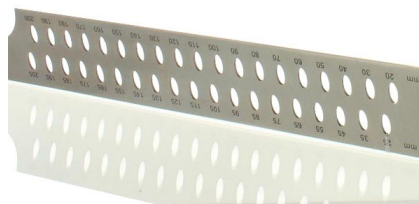
Without millimeter scale



Very elastic thanks to spring steel

Features

- Made of stainless steel
- Break-resistant 4-point welded joint
- With marking holes
- Very elastic thanks to spring steel



With marking holes

Specifications

Dimensions	800 x 320 x 1,3 mm
Warranty / Months	24
Accuracy of the 90° angle	0,028°
EAN	4012589900813