

Carpenter's square hedue ZV 600 mm with mm scale type A

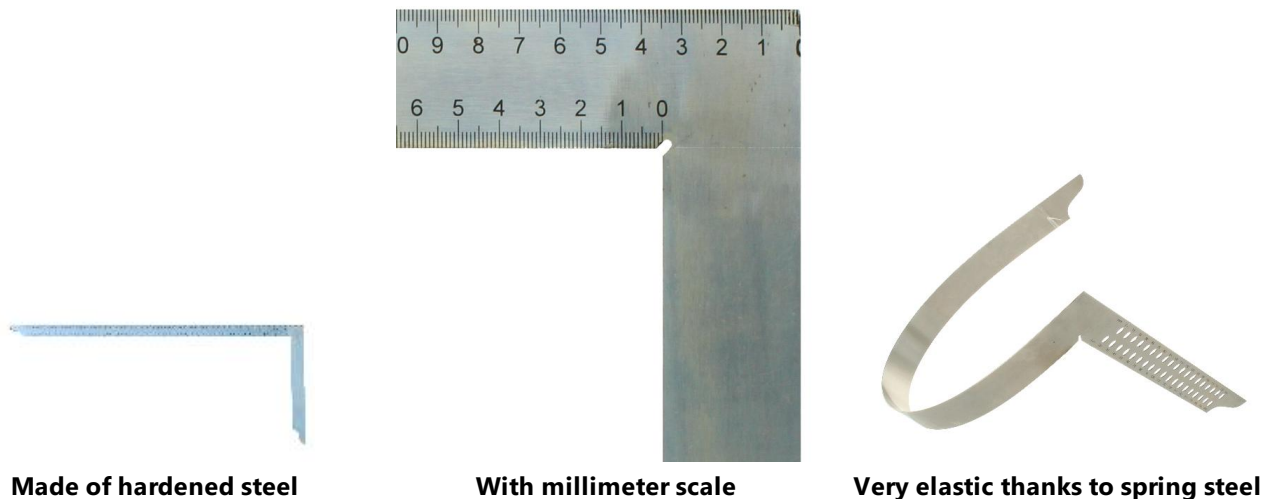
Seamless carpenter's square made of galvanized steel

The seamless carpenter's square is made of galvanized spring steel, which makes it particularly resistant to rust, acid and other environmental influences.

Thanks to the spring steel used, this angle has very high elasticity, allowing it to be bent without permanent deformation. The angle bracket can therefore be nestled against workpieces without any problems and then returns to its original state.

The high and lasting accuracy is achieved, among other things, by the seamless welded connection of the legs.

The carpenter's square is used in the production and finishing of timber joints. Components and add-on parts can be precisely aligned. The tool is also suitable for marking out and dimensioning.



Made of hardened steel

With millimeter scale

Very elastic thanks to spring steel

Features

- Made of hardened steel
- Rust protected by durable galvanization
- With millimeter scale
- Very elastic thanks to spring steel

Specifications

Dimensions	600 x 280 x 1,5 mm
Warranty / Months	24
Accuracy of the 90° angle	0,028°
EAN	4012589860605