

Article No. A330

## Mitre square 300 mm walnut

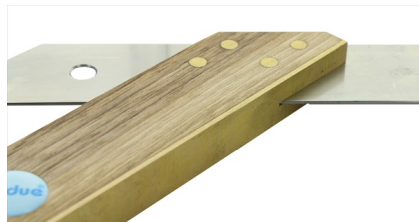
### Precise mitre square for marking out, measuring and checking 45° angles

The handle is made of high-quality walnut wood and is fitted with a brass profile on the inner leg. The handle groove on both sides means that the angle always sits comfortably in the hand.

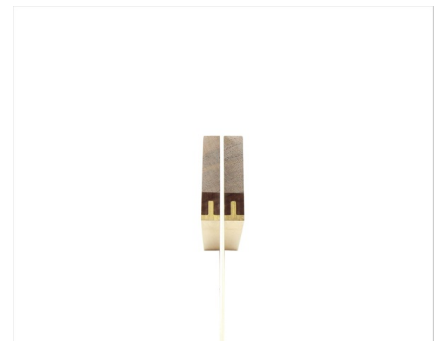
The mitre gauge gets its great stability from the 4-fold riveting of the blade to the leg.



**Stainless steel tongue**



**Stability due to the 4-fold riveting**



**With brass fitting**

### Features

- **Stainless steel tongue**
- **With brass fitting**
- **Stability due to the 4-fold riveting**
- **Walnut handle**

### Specifications

Length	300 mm
Warranty / Months	24
Accuracy of the 45° angle	0,06°
EAN	4012589653306