

## Aluminum leveling tripod 150 cm hedue NS2

### Suitable for construction and surveyor's levels or rotary lasers

Thanks to the flat tripod plates, the medium-weight leveling tripods are suitable for construction and surveyor's levels as well as for rotating lasers. An aperture enables the use of an optical plumb beam. The aluminum used gives the tripod a high level of robustness and weather resistance, and the tripod legs can also be positioned securely in rough terrain using the entry aid.



With quick clamp



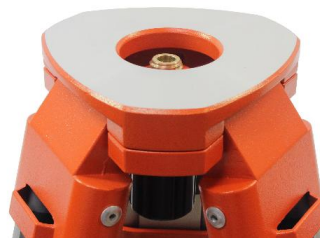
Stable positioning even in rough terrain thanks to the entry aid



With quick clamp

### Features

- With quick clamp
- Passage for an optical plumb beam
- Stable positioning even in rough terrain thanks to the entry aid
- With transport lock and shoulder strap



Passage for an optical plumb beam

### Specifications

|                   |               |
|-------------------|---------------|
| Minimum height    | 90 cm         |
| Maximum height    | 150 cm        |
| Transport length  | 100 cm        |
| Thread            | 5/8"          |
| Weight            | 3,0 kg        |
| Warranty / Months | 24            |
| EAN               | 4012589010468 |

