




hedue[®] WM3

Art.-Nr. D107, D109

How to...

-  Compound mitre
-  Doppelte Gehrung
-  Double onglet





Compound mitre



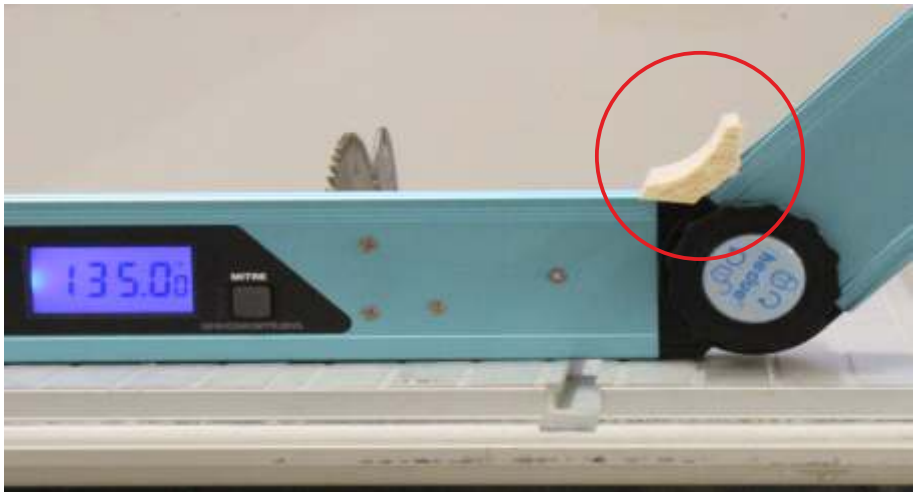
Doppelte Gehrung



Double onglet



1.



2.



HOLD  2 sec. SUP 45° = SPR 45°

3.



HOLD  2 sec.

4.



MITF  2 sec.

5.



MITF  2 sec.  SPR  

6.



7.



8.



9.



10.



1 X **MITRE** → **BVL** = 30,45°

11.

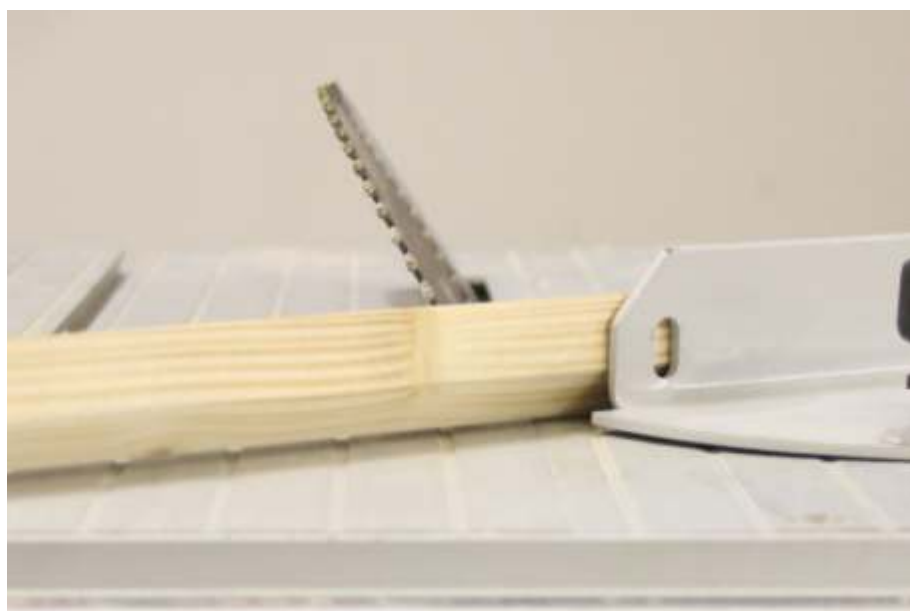


MTR = 35,95°

12.



13.



14.



15.

